


# KORG

***Pa2***  ***PRO***

***Pa 800***

***Pa 500***

***Pa1*** 

## SongBook Editor 1.3

## License Agreement

Your use of this software indicates your acceptance of this license agreement and warranty. Please carefully read these terms and conditions prior to the use of this software.

**Copyright.** All title and copyrights in and to this software are owned by KORG Italy SpA (hereafter simply indicated as “Korg”). This software is protected by copyright laws and international treaty provisions.

**Freeware.** Although this software is free, it is not “public domain”. It is a copyrighted software program, and Korg reserves all rights. Therefore:

- This software cannot be sold, either by itself or in combination with any other product, without the express written permission of Korg.
- If you are a user group which is publishing a DVD-ROM, CD-ROM, pen drive or floppy disk collection, you may include this software and all of its related files without restriction, save that the entire original package is included.
- If you are a hard disk vendor which distributes PD, shareware, and freeware on your disk drives, you are welcome to distribute this software. Contact Korg for up-to date versions and information.
- Commercial publishers and distributors of CD-ROM software collections, to include any and all software compilations provided as an adjunct to printed or online publications, may not distribute this software on CD-ROM without the express written permission of Korg.
- This software may be posted on an information service which charges its users for general connection time and downloading, but it may NOT be posted to an information service which will charge for the specific right to download it, without the express written permission of Korg.
- This software may be given away as a support utility for a package which is itself to be given away. People who need to distribute it as a support utility should contact Korg for up-to-date versions and information.

**Address.** Please address all correspondence to:

KORG Italy SpA – Via Cagiata, 85 – 60027 Osimo (AN), Italy – [www.korgpa.com](http://www.korgpa.com)

Please note that we cannot provide technical support for this software (or any of our other freeware products).

**Disclaimer of Warranty.** THIS SOFTWARE AND THE ACCOMPANYING FILES ARE DISTRIBUTED “AS IS” AND WITHOUT WARRANTIES AS TO PERFORMANCE OR MERCHANTABILITY OR ANY OTHER WARRANTIES WHETHER EXPRESSED OR IMPLIED. NO WARRANTY OF FITNESS FOR A PARTICULAR PURPOSE IS OFFERED.

**Distribution.** This software is freeware and may be freely copied and distributed as long as the entire unmodified program is copied and no fee is charged.

**Support.** This software is given “as is”. No support is granted by KORG.

**Liability.** Korg shall not be liable for errors contained in information and software downloaded from the Korg Website, or otherwise obtained from the Korg Website in any manner. Korg will not in any event be liable for any direct, indirect, special, incidental or consequential damages whatsoever (including lost profits, lost data, or business interruption) related to any use, reproduction, modification, or distribution of the software, results, documentation or links provided by the Korg Website.

**No Disassembly or Decryption.** You may not disassemble or decompile the Software without prior written consent of Korg.

**Transfer.** Your license will automatically terminate upon any transfer of the Software. Upon transfer, you must deliver the Software, including any copies and related documentation, to the transferee. The transferee must accept these License Terms as a condition to the transfer.

**Termination.** Korg may terminate your license upon notice for failure to comply with any of these License Terms. Upon termination, you must immediately destroy the Software, together with all copies, adaptations and merged portions in any form.

**Data Handling.** Data may sometimes be lost due to incorrect user action. Be sure to backup important data. Korg will not be responsible for damages caused by data loss.

**Disclaimer.** The information contained in this manual have been carefully revised and checked through. Due to our constant efforts to improve our products, the specifications might differ to those in the manual. Korg is not responsible for any eventual differences found between the specifications and the contents of the instruction manual – the specifications being subject to change without prior notice.

**Trademarks.** Windows is a registered trademark of Microsoft Corporation. All other trademarks or registered trademarks are the property of their respective holders.

# Table of contents

<b>Introduction</b>	<b>2</b>	Changing the view options	10
<b>Installing the software</b>	<b>2</b>	How to change the sorting order	10
PC system requirements	2	How to change the ascending/descending order	10
Pa2X system requirement	2	How to resize a column	10
Pa1X system requirement	2	How to show/hide a column	11
Pa800 system requirement	2	How to change the fonts and view the list in alternate colors	11
Pa500 system requirement	2	Creating a new Custom List	11
Installing the software	2	Editing a Custom List	11
<b>Choosing your instrument as the “target”</b>	<b>2</b>	<b>Importing files</b>	<b>12</b>
<b>SongBook Editor and the Pa2X/Pa800</b>	<b>3</b>	Importing files on the Pa2X/Pa800	12
Workflow	3	Importing files on the Pa1X	12
Working on the file residing in your Pa	3	Importing files on the Pa500	12
How to connect the Pa2X/Pa800 to a PC	3	<b>Frequent operations</b>	<b>14</b>
How to work on internal files	3	Merging two SongBook files	14
How to disconnect the Pa2X/Pa800 from the PC	3	Changing a Style’s position	14
Transferring SongBook files from the Pa to a PC	3	Changing the device and path to your midifiles and MP3 files	15
Caveats	3	Changing the associated text file	15
Transferring via an USB connection	4	<b>Reference</b>	<b>16</b>
Transferring via removable media (like an USB memory stick)	4	Book panel	16
Transferring SongBook files from the PC to the Pa2X/Pa800	4	SongBook files and the “.SET” folder	16
Transferring via an USB connection	4	How to open a SongBook file	16
Transferring via removable media (like an USB memory stick)	4	How to choose a file format that is right to your instrument	17
<b>SongBook Editor and the Pa1X/Pa1X Pro/Pa1X Elite</b>	<b>5</b>	How to save a SongBook file	17
Workflow	5	How to exchange data between SongBook files	17
Working on the file residing in your Pa	5	How to import midifiles and/or MP3 files from a folder	17
How to connect the Pa1X to a PC	5	How to edit a parameter	17
How to work on internal files	5	How to edit multiple entries	17
How to disconnect the Pa1X from the PC	5	How to replace a resource globally	17
Transferring SongBook files from the Pa1X to a PC	5	How to apply a filter to the current view	17
Caveats	5	How to change how data are shown in the panel	17
Transferring via an USB connection	6	Custom Lists panel	17
Transferring via floppy disk	6	How to see the content of a Custom List	17
Transferring SongBook files from the PC to the Pa1X	6	How to create a new Custom List	17
Transferring via an USB connection	6	How to delete a Custom List	17
Transferring via floppy disk	6	How to change the sorting order of the available Custom Lists	17
<b>SongBook Editor and the Pa500</b>	<b>7</b>	Selected List panel	18
Workflow	7	How to move Song entries up/down	18
Working on the file residing in your Pa	7	Other operations	18
How to connect the Pa500 to a PC	7	Menu	19
How to work on internal files	7	File menu	19
How to disconnect the Pa500 from the PC	7	Edit menu	19
Transferring SongBook files from the Pa500 to a PC	7	Help menu	19
Caveats	7	Preferences dialog box	20
Transferring via an USB connection	8	Song dialog box	20
Transferring via SD card	8	How to enter/edit parameters	20
Transferring SongBook files from the PC to the Pa500	8	Automatically updated pop-up menus	20
Transferring via an USB connection	8	Editing multiple Song entries	20
Transferring via SD card	8	Editing Style based entries	20
<b>Main screen</b>	<b>9</b>	Editing Standard MIDI File based entries	21
<b>How to use it</b>	<b>10</b>	Editing MP3 based entries	22
Creating a new Song entry	10	Filter dialog box	22
Editing a Song entry	10	<b>Appendix</b>	<b>23</b>
		Keyboard shortcuts	23

## Introduction

Thank you for using the Korg SongBook Editor for the Pa-Series Professional Arrangers. All models with the SongBook feature are supported (including Pa1X, Pa1X Pro, Pa1X Elite, Pa2X Pro, Pa800 and Pa500).

With the SongBook Editor you can comfortably view and edit a Korg Pa-Series SongBook file with your PC. It allows you to:

- Create new Song entries.
- Edit most Song parameters.
- Rename Songs using your PC's keyboard.
- Change the order of the Songs in the lists.
- Create and edit Custom Lists.
- Drag&drop entries between SongBook files.
- Import midifiles and MP3 files from folders.
- Change Style location.
- Change the file path of midifiles, MP3 files and text files.

All editing can be done on the files residing inside the hard disk, SSD-U memory, or SD card of the Pa, without any need of transferring them to the hard disk of your PC. This way, you can work directly on the exact configuration of files residing inside your Pa's hard disk, SSD-U memory, or SD card.

As an alternative, you can transfer the files to your PC, and work there, without your instrument turned on and connected. This offers the advantage of allowing you to work far from the instrument. After editing, files must be transferred back to the Pa.

All parameters, file names and folder structure are the same on the PC as on the Pa, so there is no need to learn something new again.

**Note:** During editing, you cannot see any USB memory stick connected to your Pa2X/Pa800's USB Host port. However, you can read files (like midifiles) inside an USB memory stick connected to your PC USB port.

## Installing the software

### PC system requirements

You need a PC running under Microsoft® Windows® 2000/XP/Vista.

**Note:** Windows Installer version 2.0 (or higher) is required, and can be freely downloaded from Microsoft's website.

### Pa2X system requirement

Pa2X Pro with any version of the Operating System.

### Pa1X system requirement

Pa1X, Pa1X Pro or Pa1X Elite with Operating System version 3.0 or higher.

### Pa800 system requirement

Pa800 with Operating System version 1.51 or higher.

**Note:** OS 1.0 and 1.01 do also work, but no hard disk label is recognized.

### Pa500 system requirement

Pa500 with any version of the Operating System. The use of an SD card is mandatory.

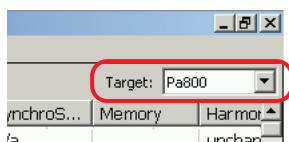
### Installing the software

After downloading the installer, follow these easy steps:

1. Double click on the installer's icon.
2. Follow the instructions appearing on the screen.

## Choosing your instrument as the "target"

The first time you run the SongBook Editor, please select your instrument as the "target" device. This will allow the program to use the correct file format.



You do not need to select it again later, since this setting will remain memorized for all following editing sessions.

# SongBook Editor and the Pa2X/Pa800

## Workflow

Please follow these steps when editing a Pa2X/Pa800 SongBook file:

1. Save the SongBook to a storage device.
2. If you do not want to work on the file residing in your Pa2X/Pa800, transfer the SongBook file to be edited to the PC.
3. Edit the SongBook file by using the SongBook Editor. You can import midifiles and MP3 files, create new Song entries, or edit existing Song entries.
4. Save the edited SongBook file.
5. If you did the edit on a copy residing in your PC, transfer the edited SongBook file back from the PC to the original position in your Pa2X/Pa800.
6. Load the SongBook file into the Pa2X/Pa800.

## Working on the file residing in your Pa

When the USB Device port of the Pa2X/Pa800 is connected to the USB port of a PC, the internal hard disk or SSD-U memory is seen as any other USB storage device connected to the PC. You can directly work on the files contained in these devices, with all the files available inside the instrument.

**Note:** No USB device connected to the USB Host port of the Pa2X/Pa800 can be seen, and must be connected to the USB port of your PC instead.

### How to connect the Pa2X/Pa800 to a PC

Here is how to connect your Pa2X/Pa800 to a PC.

1. Connect the USB Device port of the Pa2X/Pa800 to an USB port of the PC.
2. If they are still turned off, turn them on.
3. On the Pa2X/Pa800, go to the Media > USB page, and press the Enable button. The icon of the Pa2X/Pa800's internal hard drive or SSD-U memory should appear in the list of the devices connected to your PC.


### How to work on internal files

Here is how to edit the SongBook file contained into the internal hard disk or SSD-U of your Pa2X/Pa800.

**Warning:** Always keep a backup copy of your SongBook files.

1. Save the SongBook to the hard drive (optional on the Pa800) or to the internal SSD-U memory, by using the relevant Media > Save operation.
2. Open the resulting ".SET" folder with the SongBook Editor.
3. When done, load the edited ".SET" folder again, to update the active SongBook file.

### How to disconnect the Pa2X/Pa800 from the PC

To disconnect the Pa2X/Pa800 from the PC, click the Window's Toolbar > Safe Hardware Removal icon () , and select the "KORG Internal HDD USB Device" option to disconnect it from the PC.

## Transferring SongBook files from the Pa to a PC

As an alternative to working on the files residing inside your Pa2X/Pa800, you can transfer them to a PC. In this case, all editing is done off-line, i.e., entirely on the PC, without the need of having your Pa2X/Pa800 close and turned on.

There are two ways of transferring files:

- Via an USB connection.
- Via removable media (like an USB memory stick).


### Caveats

Please be aware of the following:

- The structure of the folder containing the SongBook file must not be changed. No item contained inside the original folder must be moved when editing it on the PC. The original folder must be returned to the Pa2X/Pa800 exactly as it was before editing it.
- For data consistence, a SongBook (".SBD") file and the corresponding Custom List (".SBL") file must be kept together.
- Do not edit data on your Pa2X/Pa800 while editing the SongBook on the PC. For example, rearranging the Styles, or deleting a Song, would prevent the edited SongBook file to point to the correct data.

### Transferring via an USB connection

Here is how to transfer a SongBook file from the Pa2X/Pa800 to the PC via an USB connection:

1. Save the SongBook to the hard drive or internal SSD-U memory, by using the relevant Media > Save operation.
2. Connect the USB Device port of the Pa2X/Pa800, to an USB port of the PC.
3. On the Pa2X/Pa800, go to the Media > USB page, and press the Enable button.
4. On your PC, double click the icon of the Pa2X/Pa800's internal hard drive or SSD-U memory, to open it in a window. Browse through the directories of the Pa2X/Pa800's hard drive or SSD-U memory. Copy the ".SET" folder containing the SongBook file to be edited, to the hard drive of your PC.
5. When done, click the Window's Toolbar > Safe Hardware Removal icon () , and select the "KORG Internal HDD USB Device" option to disconnect it from the PC.
6. Open the ".SET" folder containing the SongBook (".SBD") and Custom List (".SBL") files to be edited. As an alternative, you can drag&drop the ".SBD" file to the SongBook Editor's icon, or just double-click it.

### Transferring via removable media (like an USB memory stick)

Here is how to transfer a SongBook file from the Pa2X/Pa800 to the PC via removable media (like an USB memory stick):

1. Save the SongBook to a removable media, by using the relevant Media > Save operation.
2. Insert or connect the removable media to your PC.
3. Open the ".SET" folder containing the SongBook (".SBD") and Custom List (".SBL") files to be edited. As an alternative, you can drag&drop the ".SBD" file to the SongBook Editor's icon, or just double-click it.

### Transferring SongBook files from the PC to the Pa2X/Pa800

After having edited a SongBook file, you must transfer it back from the PC to your Pa2X/Pa800. There are two ways of transferring files:

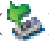
- Via an USB connection.
- Via removable media (like an USB memory stick).

### Transferring via an USB connection

Here is how to transfer a SongBook file from the PC to the Pa2X/Pa800 via an USB connection:

1. Connect the USB Device port of the Pa2X/Pa800, to an USB port of the PC.
2. If they are still turned off, turn them on.
3. On the Pa2X/Pa800, go to the Media > USB page, and press the Enable button.
4. On your PC, double click the icon of the Pa2X/Pa800's internal hard drive or SSD-U memory, to open it in a window. Copy the ".SET" folder containing the edited SongBook file to the original position in the Pa2X/Pa800's hard drive or SSD-U memory.

**Note:** This will replace the original folder on the hard drive or SSD-U memory, so we recommend you keep a backup copy of the original, unedited data.

5. When done, click the Window's Toolbar > Safe Hardware Removal icon () , and select the "KORG Internal HDD USB Device" option to disconnect it from the PC.
6. Load the SongBook file with the relevant Media > Load operation.

**Note:** This will replace the original SongBook from memory, so we recommend you keep a backup copy of the original, unedited data.

### Transferring via removable media (like an USB memory stick)

Here is how to transfer a SongBook file from the PC to the Pa2X/Pa800 via removable media (like an USB memory stick):

1. Remove the removable media from your PC, and insert or connect it to your Pa2X/Pa800.
2. Load the SongBook file with the relevant Media > Load operation.

**Note:** This will replace the original SongBook from memory, so we recommend you keep a backup copy of the original, unedited data.



# SongBook Editor and the Pa1X/Pa1X Pro/Pa1X Elite

## Workflow

Please follow these steps when editing a Pa1X SongBook file:

1. Save the SongBook to a storage device (the hard drive, or a floppy disk).
2. If you do not want to work on the file residing in your Pa1X, transfer the SongBook file to be edited to the PC.
3. Edit the SongBook file by using the SongBook Editor. You can import midifiles and MP3 files, create new Song entries, or edit existing Song entries.
4. Save the edited SongBook file.
5. If you did the edit on a copy residing in your PC, transfer the edited SongBook file back from the PC to the original position in your Pa1X.
6. Load the SongBook file into the Pa1X.

## Working on the file residing in your Pa

When the USB port of the Pa1X is connected to the USB port of a PC, the internal hard disk is seen as any other USB storage device connected to the PC. You can directly work on the files contained in these devices, with all the files available inside the instrument.

**Note:** No floppy disk or CD inserted in the Pa1X can be seen in the SongBook Editor.

## How to connect the Pa1X to a PC

Here is how to connect your Pa1X to a PC.

1. Connect the USB port of the Pa1X to an USB port of the PC.
2. If they are still turned off, turn them on.
3. On the Pa1X, go to the Disk > USB/CD page, and press the Enable button. The icon of the Pa1X's internal hard drive should appear in the list of the devices connected to your PC.


## How to work on internal files

Here is how to edit the SongBook file contained into the internal hard disk of your Pa1X.

**Warning:** Always keep a backup copy of your SongBook files.

1. Save the SongBook to the hard drive (optional on the Pa1X with speakers), by using the relevant Disk > Save operation.
2. Open the resulting ".SET" folder with the SongBook Editor.
3. When done, load the edited ".SET" folder again, to update the active SongBook file.

## How to disconnect the Pa1X from the PC

To disconnect the Pa1X from the PC, click the Window's Toolbar > Safe Hardware Removal icon () and select the "KORG Internal HDD USB Device" option to disconnect it from the PC.

## Transferring SongBook files from the Pa1X to a PC

As an alternative to working on the files residing inside your Pa1X, you can transfer them to a PC. In this case, all editing is done off-line, i.e., entirely on the PC, without the need of having your Pa1X close and turned on.

There are two ways of transferring files:

- Via an USB connection (only Pa1X exemplars with a hard drive installed).
- Via floppy disk (in this case, you need a floppy disk drive connected to your PC).


## Caveats

Please be aware of the following:

- The structure of the folder containing the SongBook file must not be changed. No item contained inside the original folder must be moved when editing it on the PC. The original folder must be returned to the Pa1X exactly as it was before editing it.
- For data consistence, a SongBook (".SBD") file and the corresponding Custom List (".SBL") file must be kept together.
- Do not edit data on your Pa1X while editing the SongBook on the PC. For example, rearranging the Styles, or deleting a Song, would prevent the edited SongBook file to point to the correct data.

## Transferring via an USB connection

Here is how to transfer a SongBook file from the Pa1X to the PC via an USB connection. **Note:** A hard disk must be installed in your Pa1X; if not, see “Transferring via floppy disk” below.

1. Save the SongBook to the hard drive (optional on the Pa1X with speakers), by using the relevant Disk > Save operation.
2. Connect the USB port of the Pa1X to an USB port of the PC.
3. On the Pa1X, go to the Disk > USB/CD page, and press the Enable button.
4. On your PC, double click the icon of the Pa1X’s internal hard drive, to open it in a window. Browse through the directories of the Pa1X’s hard drive. Copy the “.SET” folder containing the SongBook file to be edited, to the hard drive of your PC.
5. When done, click the Window’s Toolbar > Safe Hardware Removal icon (  ), and select the “KORG Internal HDD USB Device” option to disconnect it from the PC.
6. Open the “.SET” folder containing the SongBook (“.SBD”) and Custom List (“.SBL”) files to be edited. As an alternative, you can drag&drop the “.SBD” file to the SongBook Editor’s icon, or just double-click it.

## Transferring via floppy disk

Here is how to transfer a SongBook file from the Pa1X to the PC via floppy disk:

1. Save the SongBook to a floppy disk, by using the relevant Disk > Save operation.
2. Insert or connect the removable media to your PC.
3. Open the “.SET” folder containing the SongBook (“.SBD”) and Custom List (“.SBL”) files to be edited. As an alternative, you can drag&drop the “.SBD” file to the SongBook Editor’s icon, or just double-click it.

## Transferring SongBook files from the PC to the Pa1X

After having edited a SongBook file, you must transfer it back from the PC to your Pa1X. There are two ways of transferring files:

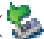
- Via an USB connection (only Pa1X exemplars with a hard drive installed).
- Via floppy disk.

## Transferring via an USB connection

Here is how to transfer a SongBook file from the PC to the Pa1X via an USB connection. **Note:** A hard disk must be installed in your Pa1X; if not, see “Transferring via floppy disk” below.

1. Connect the USB port of the Pa1X to an USB port of the PC.
2. If they are still turned off, turn them on.
3. On the Pa1X, go to the Disk > USB/CD page, and press the Enable button.
4. On your PC, double click the icon of the Pa1X’s internal hard drive, to open it in a window. Copy the “.SET” folder containing the edited SongBook file to the original position in the Pa1X’s hard drive.

**Note:** This will replace the original folder on the hard drive, so we recommend you keep a backup copy of the original, unedited data.

5. When done, click the Window’s Toolbar > Safe Hardware Removal icon (  ), and select the “KORG Internal HDD USB Device” option to disconnect it from the PC.
6. Load the SongBook file with the relevant Disk > Load operation.

**Note:** This will replace the original SongBook from memory, so we recommend you keep a backup copy of the original, unedited data.

## Transferring via floppy disk

Here is how to transfer a SongBook file from the PC to the Pa1X via floppy disk:

1. Remove the floppy disk from your PC, and insert it into the floppy disk drive of your Pa1X.
2. Load the SongBook file with the relevant Disk > Load operation.

**Note:** This will replace the original SongBook from memory, so we recommend you keep a backup copy of the original, unedited data.



# SongBook Editor and the Pa500

## Workflow

Please follow these steps when editing a Pa500 SongBook file:

1. Insert an SD card into the SD card drive.
2. Save the SongBook to the SD card.
3. If you do not want to work on the file residing in the SD card inserted in your Pa500, transfer the SongBook file to be edited to the PC.
4. Edit the SongBook file by using the SongBook Editor. You can import midifiles, create new Song entries, or edit existing Song entries.
5. Save the edited SongBook file.
6. If you did the edit on a copy residing in your PC, transfer the edited SongBook file back from the PC to the original position in your Pa500.
7. Load the SongBook file into the Pa500.

## Working on the file residing in your Pa

When the USB port of the Pa500 is connected to the USB port of a PC, an SD card inserted into the SD drive is seen as any other USB storage device connected to the PC. You can directly work on the files contained in these devices, with all the files available inside the instrument.

### How to connect the Pa500 to a PC

Here is how to connect your Pa500 to a PC.

1. Insert an SD card into the SD card drive.
2. Connect the USB port of the Pa500 to an USB port of the PC.
3. If they are still turned off, turn them on.
4. On the Pa500, go to the Media > USB page, and press the Enable button. The icon of the Pa500's SD card should appear in the list of devices connected to your PC.


### How to work on internal files

Here is how to edit the SongBook file contained in an SD card inserted into the SD drive of your Pa500.

**Warning:** Always keep a backup copy of your SongBook files.

1. Save the SongBook to the SD card, by using the relevant Media > Save operation.
2. Open the resulting ".SET" folder with the SongBook Editor.
3. When done, load the edited ".SET" folder again, to update the active SongBook file.

### How to disconnect the Pa500 from the PC

To disconnect the Pa500 from the PC, click the Window's Tool-bar > Safe Hardware Removal icon () , and select the "KORG Internal HDD USB Device" option to disconnect it from the PC.

## Transferring SongBook files from the Pa500 to a PC

As an alternative to working on the files residing inside your Pa500, you can transfer them to a PC. In this case, all editing is done off-line, i.e., entirely on the PC, without the need of having your Pa500 close and turned on.

There are two ways of transferring files:

- Via an USB connection.
- Via an SD card (in this case, you need an SD card drive connected to your PC).


### Caveats

Please be aware of the following:

- The structure of the folder containing the SongBook file must not be changed. No item contained inside the original folder must be moved when editing it on the PC. The original folder must be returned to the Pa500 exactly as it was before editing it.
- For data consistence, a SongBook (".SBD") file and the corresponding Custom List (".SBL") file must be kept together.
- Do not edit data on your Pa500 while editing the SongBook on the PC. For example, rearranging the Styles, or deleting a Song, would prevent the edited SongBook file to point to the correct data.

## Transferring via an USB connection

Here is how to transfer a SongBook file from the Pa500 to the PC via an USB connection:

1. Insert an SD card into the SD card drive.
2. Save the SongBook to the SD card, by using the relevant Media > Save operation.
3. Connect the USB port of the Pa500 to an USB port of the PC.
4. On the Pa500, go to the Media > USB page, and press the Enable button.
5. On your PC, double click the icon of the SD card inserted into your Pa500's SD card drive, to open it in a window. Browse through the directories of the SD card. Copy the ".SET" folder containing the SongBook file to be edited, to the hard drive of your PC.
6. When done, click the Window's Toolbar > Safe Hardware Removal icon () and select the "KORG Internal HDD USB Device" option to disconnect it from the PC.
7. Open the ".SET" folder containing the SongBook (".SBD") and Custom List (".SBL") files to be edited. As an alternative, you can drag&drop the ".SBD" file to the SongBook Editor's icon, or just double-click it.

## Transferring via SD card

Here is how to transfer a SongBook file from the Pa500 to the PC via SD card:

1. Insert an SD card into the SD card drive.
2. Save the SongBook to the SD card, by using the relevant Media > Save operation.
3. Insert the SD card into the SD drive of your PC.
4. Open the ".SET" folder containing the SongBook (".SBD") and Custom List (".SBL") files to be edited. As an alternative, you can drag&drop the ".SBD" file to the SongBook Editor's icon, or just double-click it.

---

## Transferring SongBook files from the PC to the Pa500

---

After having edited a SongBook file, you must transfer it back from the PC to your Pa500. There are two ways of transferring files:


- Via an USB connection.
- Via SD card.

## Transferring via an USB connection

Here is how to transfer a SongBook file from the PC to the Pa500 via an USB connection:

1. Insert an SD card into the SD card drive.
2. Connect the USB port of the Pa500 to an USB port of the PC.
3. If they are still turned off, turn them on.
4. On the Pa500, go to the Media > USB page, and press the Enable button.
5. On your PC, double click the icon of the SD card inserted into your Pa500's SD card drive, to open it in a window. Copy the ".SET" folder containing the edited SongBook file to the original position in the SD card.

**Note:** This will replace the original folder on the SD card, so we recommend you keep a backup copy of the original, unedited data.

6. When done, click the Window's Toolbar > Safe Hardware Removal icon () and select the "KORG Internal HDD USB Device" option to disconnect it from the PC.
7. Load the SongBook file with the relevant Media > Load operation.

**Note:** This will replace the original SongBook from memory, so we recommend you keep a backup copy of the original, unedited data.

## Transferring via SD card

Here is how to transfer a SongBook file from the PC to the Pa500 via SD card:

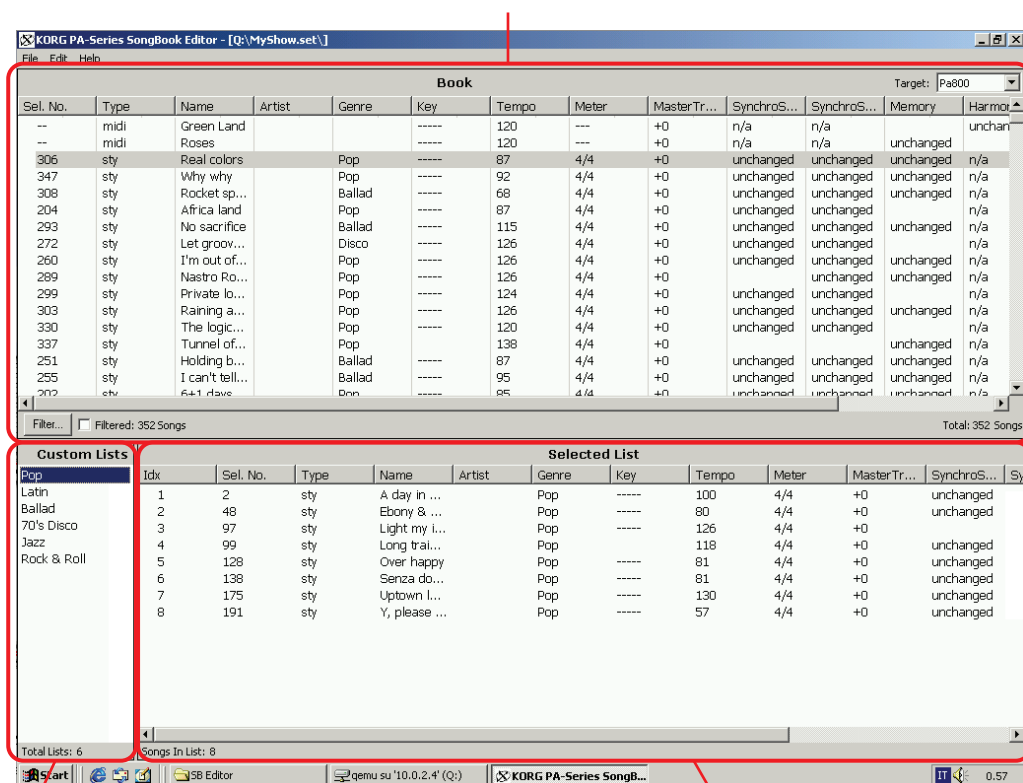
1. Remove the SD card from your PC, and insert it into your Pa500's SD card drive.
2. Load the SongBook file with the relevant Media > Load operation.

**Note:** This will replace the original SongBook from memory, so we recommend you keep a backup copy of the original, unedited data.

# Main screen

When you run the SongBook Editor, a window split in three panels appears in the display:

*The "Book" panel. This is where the full list of Songs included in a ".SBD" file appears. It is equivalent to the "Book" page of the Pa.*



*The "Custom List" panel. This is where you can see all the available Custom Lists (".SBL" file) associated to the selected Book (".SBD" file). All available Custom Lists are included in the same file. It is equivalent to the "Custom List" pop-up menu of the Pa.*

**Note:** To be opened, the Custom List file must reside in the same "Song-Book" folder as the Book file.

*\* The "Selected List" panel. This is where you can see the content of the selected Custom List. It is equivalent to the "Custom List" page of the Pa.*

A standard menubar on top of the window contains the available commands. See "Menu" on page 19 for more information. For more information on the various parts of the main screen, see "Reference" on page 16.

## How to use it

### Creating a new Song entry

You can create one of three types of Song entries in the Book list.

- Choose the Edit > New Song > Style (Ctrl+N) command to create a new Song entry based on a Style.
- Choose the Edit > New Song > MIDI (Shift+Ctrl+N) command to create a new Song entry based on a Standard MIDI File.
- Choose the Edit > New Song > MP3 (Alt+N) command to create a new Song entry based on an MP3 file.

After having chosen one of the above, the Song dialog box will appear, to let you edit the various parameters. See “Book panel” on page 16 for a list of editable parameters.

When you create a new Song, you can also link the musical resource (Style, Standard MIDI File or MP3 file) associated to it, keeping in mind that actual musical resources are not contained in your PC’s hard drive, but inside the Pa’s memory.

**Note:** As an alternative, you can associate the correct resource to each Song entry after moving the SongBook file back to the Pa.

**Hint:** To quickly locate all the new Songs when returning the Song-Book file to the Pa, it is a good idea to add an asterisk (\*) at the beginning of their name, or add them to a dedicated Custom List.

### Editing a Song entry

Double-click a Song entry to open the Song dialog box and edit the various parameters. As an alternative, click it with the right mouse button, and choose the Edit command. If you select more than a single entry (by using Shift+Click or Ctrl+Click), you can edit multiple entries at the same time.

When an entry is edited, its color changes, to help you identify the edited entries. After a Save or Save As operation, the color of all entries is reset.

Note that not all parameters can be edited. For a list of editable parameters, see “Book panel” on page 16.

### Changing the view options

#### How to change the sorting order

Click a column’s header to select the corresponding sorting criterion (by Name, Genre, Author, and so on).

Each time you choose a different sorting criterion, the previous criterion is considered as a “sub-criterion” for the new one. For example, you can alphabetically order your entries by Name:

Name ▲	Genre
2much afte...	Ballad
A day in pa...	Pop
A gigolo	Pop
A groovy love	Ballad
A hard day...	Pop

Then you change the order to Genre; inside the genre alphabetical ordering, entries are still alphabetically ordered by name:

Name	Genre ▲
2much afte...	Ballad
A groovy love	Ballad
A whiter sh...	Ballad
Again natur...	Ballad
All once	Ballad

#### How to change the ascending/descending order

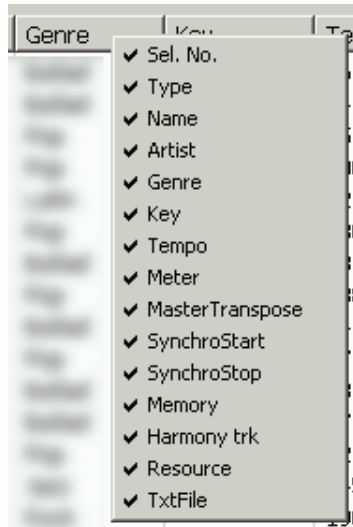
Each time you click a column’s header, the ascending/descending order is changed.

#### How to resize a column

To resize a column, grab the right margin of its header, then drag it. To reset it to the optimum size, double-click the right margin.

## How to show/hide a column

Click a column's header with the right mouse-button. When the list of available options appears, check/uncheck the name of the column to be shown/hidden.



## How to change the fonts and view the list in alternate colors

Choose the File > Preferences command to change the fonts and assign a different background color to the various panels. You can also assign different background colors to the odd and even rows of the Book panel. (See “Preferences dialog box” on page 20)

## Creating a new Custom List

Choose the Edit > New List (Ctrl+L) command to create a new Custom List. The new list will appear in the Custom Lists panel. Custom Lists are contained in an “.SBL” file saved in the same “SongBook” folder of the “.SBD” (Book) file.

## Editing a Custom List

Click a Custom List in the Custom Lists panel to see the list's content in the Selected List panel. You can add or delete entries, and change their order by dragging&dropping them, or by using the Move Up (Ctrl+Arrow Up) and Move Down (Ctrl+Arrow Down) commands.

## Importing files

Instead of editing existing SongBook files, you can create new SongBook files by importing midifiles and MP3 files from one of the following devices:

- the internal hard disk of your Pa2X, Pa1X or Pa800 (if installed)
- an SD card inserted into your Pa500's internal SD card drive
- the hard drive of your PC
- an USB memory stick connected to an USB port of your PC (this is only possible with Pa2X and Pa800).

**Note:** MP3 files are optional on the Pa800, and are only available if the optional EXBP-Dual MP3 board is installed. They are optional on the Pa1X, and are only available if the optional EXBP-MP3 board is installed. They are not available on the Pa500.

Instead of creating a new SongBook file, you can import midifiles and MP3 files into an existing SongBook file, merging existing entries with new entries automatically created from imported files.

- Importing from the Pa is advisable, since you'll have all the referred files already inside the instrument.
- If you import from your PC, you must later change the referred device (see "Changing the device and path to your midifiles and MP3 files" on page 15).
- *On the Pa2X/Pa800:* If you import from an USB memory stick connected to an USB port of your PC, you must just move the stick to the USB Host port of the Pa2X/Pa800.


**Note:** In case there are ID3 entries inside the imported MP3 files, these are converted into SongBook data (title, author...). Basic data and some metadata inside midifiles are also converted into SongBook data (time signature, starting tempo).

### Importing files on the Pa2X/Pa800

Here is how to import files for a Pa2X/Pa800:


1. If you want to import midifiles and/or MP3 files from the Pa2X/Pa800, connect the USB Device port of the Pa to an USB port of the PC.  
  
If they are still turned off, turn them on.  
  
On the Pa2X/Pa800, go to the Media > USB page, and press the Enable button.
2. If you want to import midifiles and/or MP3 files from an USB memory device (for example, a memory stick) to be later connected to the Pa, connect the USB memory device to the USB port of your PC.
3. In the SongBook Editor, choose the File > Import files command. A standard file selector will appear. You can select files inside one of the following devices:
  - the hard disk of your PC
  - the hard disk of your Pa2X/Pa800
  - the SSD-U memory of your Pa2X/Pa800

- the USB storage device (for example, a memory stick) connected to the USB port of your PC.

4. Select the file(s) with the ".mid", ".kar" and ".mp3" extensions you want to import. Then click the Open command to import the selected midifiles and MP3 files, and convert them to SongBook entries.
5. If your Pa2X/Pa800 is connected, when done click the Window's Toolbar > Safe Hardware Removal icon () and select the "KORG Internal HDD USB Device" option to disconnect it from the PC.

### Importing files on the Pa1X

Here is how to import files for a Pa1X:


1. If you want to import midifiles and/or MP3 files from the Pa1X, connect the USB port of the Pa1X to an USB port of the PC.  
  
If they are still turned off, turn them on.  
  
On the Pa1X, go to the Disk > USB/CD page, and press the Enable button.
2. In the SongBook Editor, choose the File > Import files command. A standard file selector will appear. You can select files inside one of the following devices:
  - the hard disk of your PC
  - the hard disk of your Pa1X (optional in the model with speakers)
3. Select the file(s) with the ".mid", ".kar" and ".mp3" extensions you want to import. Then click the Open command to import the selected midifiles and MP3 files, and convert them to SongBook entries.
4. If your Pa1X is connected, when done click the Window's Toolbar > Safe Hardware Removal icon () and select the "KORG Internal HDD USB Device" option to disconnect it from the PC.

### Importing files on the Pa500

Here is how to import files for a Pa500:

1. If you want to import midifiles from an SD card, insert the card into the dedicated slot of the Pa500.
2. Connect the USB port of the Pa500 to an USB port of the PC.  
  
If they are still turned off, turn them on.  
  
On the Pa500, go to the Media > USB page, and press the Enable button.



3. In the SongBook Editor, choose the File > Import files command. A standard file selector will appear. You can select files inside one of the following devices:
  - the hard disk of your PC
  - the SD card inserted in your Pa500
4. Select the file(s) with the “.mid” or “.kar” extensions you want to import. Then click the Open command to import the selected midifiles, and convert them to SongBook entries.
5. If your Pa500 is connected, when done click the Window's Toolbar > Safe Hardware Removal icon () , and select the “KORG Internal HDD USB Device” option to disconnect it from the PC.

## Frequent operations

### Merging two SongBook files

You can merge entries from different SongBook files.

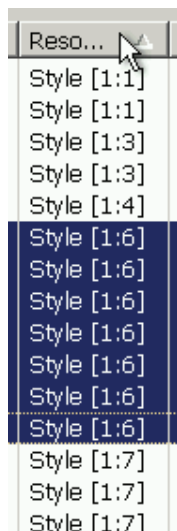
1. Run the SongBook Editor, and open the first SongBook file.
2. Run a second session of the SongBook Editor, and open the second SongBook file.
3. With the windows of both sessions on-screen, drag & drop entries from one window to the other one. You can drag&drop Songs between the Book and Selected List panels. When moving a Song from a source Selected List to a target one, the corresponding entry will be automatically created at the target Book panel.

**Note:** When copying a Song to a different SongBook file, the Song's Song Selection Number is removed.

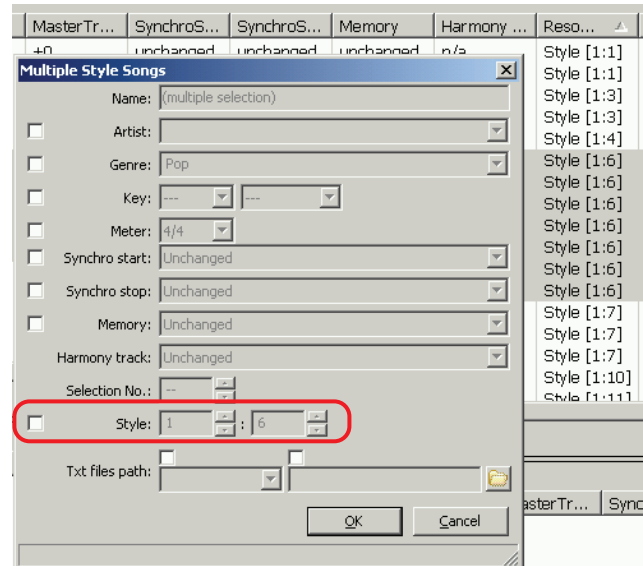
### Changing a Style's position

Multiple entry editing allows for global replacement of resources. For example, say you moved a Style to a different location in your instrument; you can easily replace this Style in all entries making use of it. For example, if you moved the Style "Jazz Waltz" from location <1:6> to location <10:1>, here is how to edit your SongBook entries to reassign the Style:

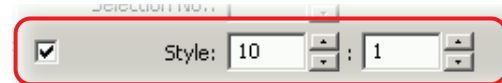
1. In the Book panel, click the Resource label to order all entries by Resource.



2. Locate and select all entries referenced to Style <1:6>, then double click one of them (or right-click and choose the Edit command) to open the Song dialog box for multiple entry editing.



3. In the Song dialog box, check the "Style" checkbox, choose bank 10 and location 1, then click OK to close the dialog box.



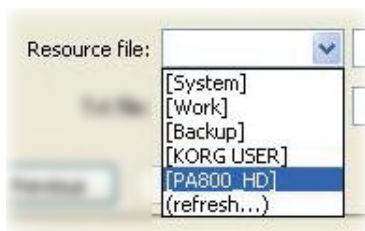
4. Notice how all selected entries are now referenced to Style <10:1>.


## Changing the device and path to your midifiles and MP3 files

In case you move your midifiles or MP3 files to a different device or folder, for example from your PC's hard disk to an USB memory stick, or from the root to the "Midifile" folder, it is easy to reassign them to the new device or folder.

When editing a single entry, you can edit both the file path and the file name. When editing multiple entries, you can only edit the file path.

1. Select the entry(es) to be edited, right-click it (them) and choose the Edit command.
2. When the (Multiple) MIDI Song or MP3 Song opens, locate the "Resource file" line (or check the "Resource path" checkbox, in case of multiple entries).
3. Choose the new device or path from the "Resource file" pop-up menu.



You can also click on the yellow folder icon (  ) to browse and locate the new file in the connected devices.

Storage devices, like hard disks and USB memory sticks, are represented by IDs, as in the following table:

ID	Storage device
<b>Pa1X</b>	
B:	Floppy Disk
C: or [label] <sup>(a)</sup>	Hard Disk
D:	CD Drive
<b>Pa2X/Pa800</b>	
F2: or [label] <sup>(a)(b)</sup>	Internal SSD-U memory
C: or [label] <sup>(a)(b)</sup>	Internal Hard Disk
[label]	Storage device connected to one of the USB Host ports.
<b>Pa500</b>	
E: or [label] <sup>(a)</sup>	SD card

(a). The label is the name you assigned to the storage device in the Disk/Media > Format page, prior to formatting it.

(b). Note: The [label] can be applied only starting from Pa800 OS 1.02.

**Hint:** If you keep most of your files in an USB memory stick, you can easily move the stick from your PC and your Pa2X/Pa800. In this case it may be a good idea to choose the USB stick as the device.

## Changing the associated text file

In case you move your lyrics text files to a different device or folder, for example from your PC's hard disk to an USB memory stick, or from the root to the "Lyrics" folder, it is easy to reassign them to the new device or folder.

1. Select the entry(es) to be edited, right-click it (them) and choose the Edit command.
2. When the (Multiple) MIDI Song or MP3 Song opens, locate the "Text file" line (or check the "Text file path" checkbox, in case of multiple entries).
3. Enter the new device or path. You can also click on the yellow folder icon to browse the new file in the connected devices.

A list of devices is shown in the table above.

**Hint:** If you keep most of your files in an USB memory stick, you can easily move the stick from your PC and your Pa800. In this case it may be a good idea to choose the USB stick as the device.

# Reference

## Book panel

Here you can view and edit the content of the SongBook (“SBD” file). The Book’s content is shown in a database-like fashion, with each Song entry in a row, and the various parameters of the entry in adjacent columns.

Book												Target: Pa800
Sel. No.	Type	Name	Artist	Genre	Key	Tempo	Meter	MasterTr...	SynchroS...	SynchroS...	Memory	Harmon...
--	midi	Green Land			----	120	---	+0	n/a	n/a		unchan
--	midi	Roses			----	120	---	+0	n/a	n/a	unchanged	n/a
306	sty	Real colors		Pop	----	87	4/4	+0	unchanged	unchanged	unchanged	n/a
347	sty	Why why		Pop	----	92	4/4	+0	unchanged	unchanged	unchanged	n/a
308	sty	Rocket sp...		Ballad	----	68	4/4	+0	unchanged	unchanged	unchanged	n/a
204	sty	Africa land		Pop	----	87	4/4	+0	unchanged	unchanged	unchanged	n/a
293	sty	No sacrifice		Ballad	----	115	4/4	+0	unchanged	unchanged	unchanged	n/a
272	sty	Let groov...		Disco	----	126	4/4	+0	unchanged	unchanged	unchanged	n/a
260	sty	I'm out of...		Pop	----	126	4/4	+0	unchanged	unchanged	unchanged	n/a
289	sty	Nastro Ro...		Pop	----	126	4/4	+0	unchanged	unchanged	unchanged	n/a
299	sty	Private lo...		Pop	----	124	4/4	+0	unchanged	unchanged	unchanged	n/a
303	sty	Raining a...		Pop	----	126	4/4	+0	unchanged	unchanged	unchanged	n/a
330	sty	The logic...		Pop	----	120	4/4	+0	unchanged	unchanged	unchanged	n/a
337	sty	Tunnel of...		Pop	----	138	4/4	+0			unchanged	n/a
251	sty	Holding b...		Ballad	----	87	4/4	+0	unchanged	unchanged	unchanged	n/a
255	sty	I can't tell...		Ballad	----	95	4/4	+0	unchanged	unchanged	unchanged	n/a
202	sty	6+1 days		Pop	----	85	4/4	+0	unchanged	unchanged	unchanged	n/a

The following table shows which parameters can be edited or not. Please see the User’s Manual for more information on their meaning.

Parameter	Editable/ Non-editable
Sel.No. (Song Selection Number)	√
Type Resource Type	–
Name (Song Name)	√
Artist	√
Genre	√
Key	√
Tempo	–
Meter	√
Master Transpose	–
Synchro Start Synchro Start button	√
Synchro Stop Synchro Stop button	√
Memory Memory button	√
Harmony Track	√
Resource Style based entry: Style bank and number. Song based entry: Filepath (including name) of the associated midfile or MP3 file (excluding Pa500)	√
TXT file Filepath (including name) of the text file associated to the SongBook entry	√

## SongBook files and the “.SET” folder

All SongBook files (“SBD” and “SBL” files) must be contained inside the SONGBOOK folder, inside a “.SET” folder.

The Book list may be split in several files inside the SONGDB.SBD folder. An example of a SongBook (“SBD”) filepath is the following:

```
c:\foldername.set\songbook\songdb.sbd\bank01.sbd
c:\foldername.set\songbook\songdb.sbd\bank02.sbd
...
```

On the contrary, there is only one file containing all the Custom Lists. An example of Custom List (“SBL”) filepath is the following:

```
c:\foldername.set\songbook\listdb.sbl
```

## How to open a SongBook file

Choose the File > Open command to open a “.SET” folder containing a SongBook (“SBD”) and Custom List (“SBL”) file. As an alternative, you can drag the SongBook file to the Book window, or to the SongBook Editor’s application icon. Also, you can double-click the “SBD” file.

**Note:** To be opened, the Custom List file must reside in the same “SongBook” folder as the Book file.

## How to choose a file format that is right to your instrument

Use the Target pop-up menu to choose either the Pa2X, Pa800, Pa500 or the Pa1X as your target instrument. Note that Pa1X must be updated to OS version 3.01 to read a SongBook Editor 1.3 file, and Pa800 must be updated to OS version 1.51 or higher to take full advantage of the Import files feature.

## How to save a SongBook file

After editing, choose the File > Save or Save As... command. When choosing the Save... command, the file is saved at the original position. When choosing the Save As... command, you must first create a ".SET" folder, then save to it. The SongBook (".SBD") and Custom List (".SBL") files will be saved inside.

## How to exchange data between SongBook files

You can open two (or more) application sessions, open a different SongBook file in each of them, and exchange data between them. Each SongBook file will appear in a different application window. You can drag&drop Songs between the Book and Selected List panels. When moving a Song from a source Selected List to a target one, the corresponding entry will be automatically created at the target Book panel.

**Note:** When copying a Song to a different SongBook file, the Song's Song Selection Number is removed.

## How to import midifiles and/or MP3 files from a folder

You can import all the midifiles and MP3\* files contained in a folder, and automatically convert them into SongBook entries, by choosing the File > Import command (see "Importing files" on page 12). The imported entries can be added to an existing SongBook file, or to a new, empty SongBook file.

\*Only on models with the MP3 player installed.

## How to edit a parameter

Double-click the Song entry you want to edit to open the Song dialog box. As an alternative, click it with the right mouse button, and choose the Edit command.

**Note:** An entry that has been edited, but not yet saved, is shown in red. It returns black when you save the SongBook file.

## How to edit multiple entries

Select more than a single entry, by Shift-clicking (for consecutive selection) or Control-clicking (for alternative selection), then double-click one of them – while still holding Shift and Control – to open the Song dialog box. As an alternative, click with the right mouse button, and choose the Edit command. Please be advised some parameters cannot be modified when editing more than a single entry (for example, the Song name).

## How to replace a resource globally

Multiple entry editing allows for global replacement of resources. For more information, see "Changing a Style's position" on page 14.

## How to apply a filter to the current view

If you want to view only the Songs of a single author, or genre, or selected according to other criteria, you can check the Filtered checkbox in the lower left corner of the Book panel. To define the view criteria press the nearby Filter... button, or choose the Edit > Filter... (Ctrl+F) command to open the Filter dialog box (see "Filter dialog box" on page 22 for details).

## How to change how data are shown in the panel

See "Changing the view options" on page 10 for information on changing the view options.

## Custom Lists panel

Here you can view the available Custom Lists (".SBL" files), associated to the current SongBook (".SBD" file).

**Note:** To be opened, the Custom List file must reside in the same "SongBook" folder as the Book file.

## How to see the content of a Custom List

Click a Custom List name to see its content in the Selected List panel on the right.

## How to create a new Custom List

Choose the File > New List (Ctrl+L) command.

## How to delete a Custom List

Select the Custom List to be deleted, then press Delete.

## How to change the sorting order of the available Custom Lists

Use the Move Up (Ctrl+Arrow Up) or Move Down (Ctrl+Arrow Down) command to move the selected Custom List upwards or downwards.



## Selected List panel

Here you can view and edit the content of the Custom List (“SBL” file) selected in the Custom List panel on the left. The Custom List’s content is shown in a database-like fashion, with each Song entry in a row, and the various parameters of the entry in adjacent columns.

Selected List										
Idx	Sel. No.	Type	Name	Artist	Genre	Key	Tempo	Meter	MasterTr...	SynchroS... Sy
1	2	sty	A day in ...		Pop	-----	100	4/4	+0	unchanged
2	48	sty	Ebony & ...		Pop	-----	80	4/4	+0	unchanged
3	97	sty	Light my l...		Pop	-----	126	4/4	+0	unchanged
4	99	sty	Long trai...		Pop		118	4/4	+0	unchanged
5	128	sty	Over happy		Pop	-----	81	4/4	+0	unchanged
6	138	sty	Senza do...		Pop	-----	81	4/4	+0	unchanged
7	175	sty	Uptown l...		Pop	-----	130	4/4	+0	unchanged
8	191	sty	Y, please ...		Pop	-----	57	4/4	+0	unchanged

Songs In List: 8

### How to move Song entries up/down

Simply drag&drop the entries to move them up or down the list. As an alternative, select the item to be moved, then choose the Edit > Move Up (Ctrl+Arrow Up) or Move Down (Ctrl+Arrow Down) command.

### Other operations

See “Book panel” on page 16 for more information on editing the Song entries.

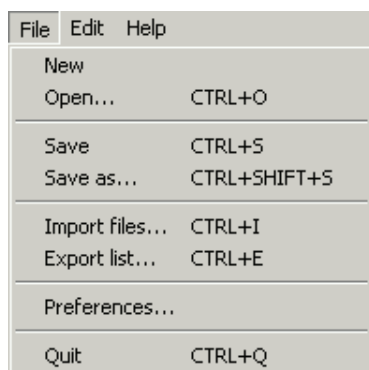


## Menu

The menubar on top of the window is where you can access the available commands.

### File menu

This menu contains file-related commands.



- **New:** Choose this command to create a new SongBook file.
- **Open...:** [Ctrl+O] Choose this command to open a “.SET” folder containing a SongBook (“SBD”) and a Custom List (“SBL”) file. The Custom List file must reside in the same directory as the SongBook file.

- **Save:** [Ctrl+S] Choose this command to save the SongBook and Custom Lists in edit.

**Warning:** If you have loaded and edited a SongBook file created on a Pa1X with an older OS installed (i.e., prior to version 3.0), saving it will make it unreadable on Pa1X exemplars running an OS older than version 3.0. Please update the Pa1X to the latest OS version.

**Note:** After a Save operation, the color of all edited entries is reset.

- **Save As...:** [Ctrl+Shift+S] Choose this command to select a location where to save the SongBook (“SBD”) file and Custom Lists (“SBL”) file being edited. When the files selector appears, create a new “.SET” folder, then save to it. The SongBook and Custom List files will be saved inside the new folder.

**Note:** After a Save As operation, the color of all edited entries is reset.

- **Import files...:** [Ctrl+I] Choose this command to import all the Songs contained in a folder into the current SongBook file. In case there are ID3 entries inside the imported MP3 files, these are converted into SongBook data (title, author...). Basic data and some metadata inside midifiles are also converted into SongBook data (title, time signature, starting tempo).

- **Export list...:** [Ctrl+E] Choose this command to save the Book list or a Custom List as a text (“.TXT”) file. This is the same type of file generated by the SongBook > Page Menu > Export As Text File command in the Pa.

**Hint:** You can export a partial list by selecting some entries, using the Copy command, and then pasting into a text file or spreadsheet.

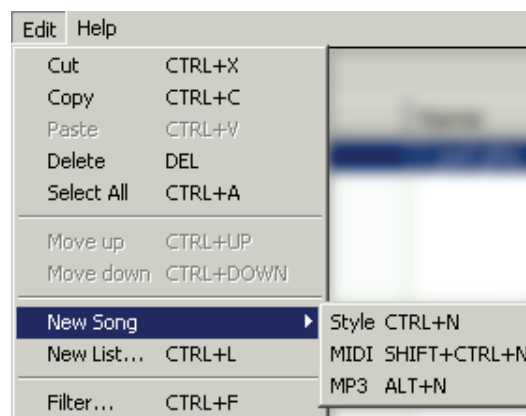
**Hint:** To print a text file, use a non-proportional font and the landscape page layout.

- **Preferences...:** Choose this command to open the Preferences dialog box (see on page 20), and set the display preferences for the SongBook Editor.

- **Quit:** [Ctrl+Q] Choose this command to exit the SongBook Editor.

### Edit menu

This menu contains edit commands to be applied to the selected item(s).



- **Cut:** [Ctrl+X] Choose this command to cut the selected item(s) and move it into the clipboard.

- **Copy:** [Ctrl+C] Choose this command to copy the selected item(s) into the clipboard. The clipboard’s content is in the “text delimited by tabs” format.

- **Paste:** [Ctrl+V] Choose this command to paste at the current position the item(s) contained in the clipboard.

- **Delete:** [Del] Choose this command to delete the selected item(s).

- **Select All:** [Ctrl+A] Choose this command to select all the entries in the list.

- **Move Up:** [Ctrl+Up] Move the selected item(s) up one position.

- **Move Down:** [Ctrl+Down] Move the selected item(s) down one position.

- **New Song...:** Choose this command to add a new Song to the current list. There are three options:

- **Style:** [Ctrl+N] Song based on a Style.
- **MIDI:** [Shift+Ctrl+N] Song based on a midifile.
- **MP3:** [Alt+N] Song based on an MP3 file.

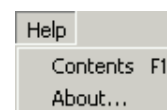
**Note:** New Songs have a default tempo of 120 BPM. Note that imported entries get the actual tempo of the imported midifile.

- **New List...:** [Ctrl+L] Choose this command to create a new Custom List.

- **Filter...:** [Ctrl+F] Choose this command to open the Filter dialog box (see on page 22), and set a display filter.

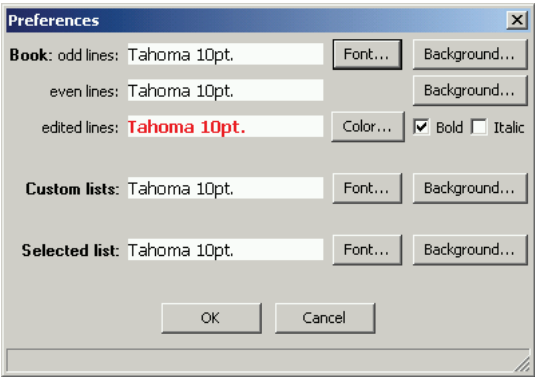
### Help menu

This menu contains the help and copyright information.



## Preferences dialog box

These preferences allow you to modify the font and background color for each of the following parameters:



- Book (Book area)
- Even lines (each two lines in the Book area)
- Edited lines (entries edited but not yet saved)
- Custom Lists (Custom Lists area)
- Selected List (Selected List area)

## Song dialog box

This dialog box appears when you double-click an existing SongBook entry, or create a new Song. Here you can edit a new or existing item.

### How to enter/edit parameters

Some parameters – i.e. Song entry names – require you enter a text string. Note that names are case-sensitive, i.e., “Name” is not the same as “name”.  
Other parameters allow you to choose a value from a pop-up menu.

### Automatically updated pop-up menus

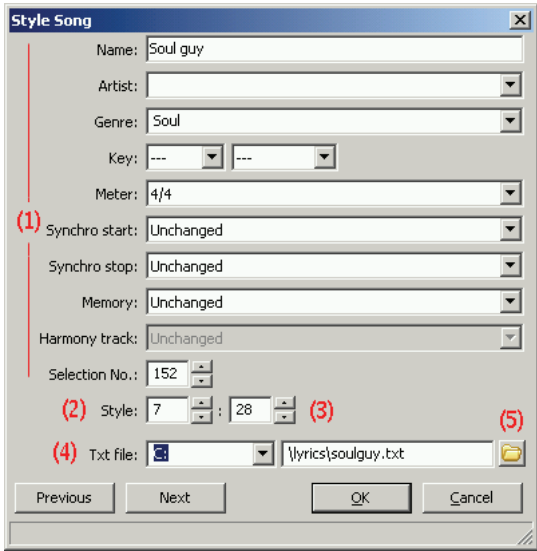
Each time you enter a new Song entry, all its data are added to the various pop-up menus, so that you can choose them when entering/editing other entries. For example, if you enter “Rock” in the Genre field of a new entry, the “Rock” option will be automatically added to the Genre pop-up menu. Pop-up menus grow each time you enter a new Song entry.

### Editing multiple Song entries

When editing more than a single entry, some parameters cannot be edited (for example, Song names).

### Editing Style based entries

With this type of entry, you can choose (respectively) the bank and number of the assigned Style.



(1) Parameters (2) Bank number (3) Style number (4) TXT file path (5) Browse icon

**Parameters** — These are the same parameters found in the SongBook pages of the instrument. The Tempo value is the one saved into the Style Performance.

**Banks** — Each bank contains a maximum of 32 Styles (apart for the EXB01 and EXB02 banks, each one containing 64 Styles); each group of 8 Styles corresponds to one of the tabs shown in the Style Select window of the instrument. Here are the banks that can be chosen:

#	Type
<b>Pa1X</b>	
1-16	Factory
17	Not used
18-20	User
21-23	Direct FD (B:\DIRECTFD.SET)
24-26	Direct HD (C:\DIRECTHD\BANK123.SET)
27-29	Direct HD (C:\DIRECTHD\BANK456.SET)
30-32	Direct HD (C:\DIRECTHD\BANK789.SET)
33	EXB01
34	EXB02
<b>Pa2X/Pa800</b>	
1-17	Factory
18-20	User
21-30	Favorite
<b>Pa500</b>	
1-14	Factory
15-16	User

**Text path** — The text path is divided into the drive unit (on the left) and the actual path (on the right). This allows you to change the drive separately from the path, so that you can copy entire directories between drives, without having to re-edit long directory strings.

An example of path is the following:

`c:\foldername1\foldername2\filename.txt`

When editing multiple entries, you can only edit the path, but not the file name; this is useful if you renamed the folder, or have moved the text files to a different folder or directory level. Check the Text file path checkbox, and enter a string similar to the following one (without any final backslash):

`c:\newfoldername1\newfoldername2`

Storage devices, like hard disks and USB memory sticks, are represented by IDs, as in the following table:

ID	Storage device
<b>Pa1X</b>	
B:	Floppy Disk
C: or [label] <sup>(a)</sup>	Hard Disk
D:	CD Drive
<b>Pa2X/Pa800</b>	
F2: or [label] <sup>(a)(b)</sup>	Internal SSD-U memory
C: or [label] <sup>(a)(b)</sup>	Internal Hard Disk
[label]	Storage device connected to one of the USB Host ports.
<b>Pa500</b>	
E: or [label] <sup>(a)</sup>	SD card

(a). The label is the name you assigned to the storage device in the Disk/Media > Format page, prior to formatting it.

(b). Note: The [label] can be applied only starting from Pa800 OS 1.02.

**Browse icon** — Click this icon to open a standard file selector, and choose the text file.

**Previous/Next buttons** — Click the Previous button to edit the previous entry of the list, or the Next button to edit the next entry of the list, without having to close the dialog box.

**OK/Cancel buttons** — Click the OK button to confirm changes and close the dialog box, or the Cancel button to abandon the changes and close the dialog box.

## Editing Standard MIDI File based entries

With this type of entry, you can write the full path of the midifile used as the resource.

(1) Parameters (2) Midifile path (3) TXT file path (4) Browse icon

**Parameters** — These are the same parameters found in the SongBook pages of the instrument. The Tempo value is only an indicator, and not the actual Tempo of the Song.

**Midifile and text paths** — The midifile and text paths are divided into the drive unit (on the left) and the actual path (on the right). This allows you to change the drive separately from the path, so that you can copy entire directories between drives, without having to re-edit long directory strings.

An example of path is the following:

`c:\foldername1\foldername2\filename.mid`

When editing multiple entries, you can only edit the path, but not the file name; this is useful if you renamed the folder, or have moved the songs to a different folder or directory level. Check the Resource path checkbox, and enter a string similar to the following one (without any final backslash):

`c:\newfoldername1\newfoldername2`

Storage devices, like hard disks and USB memory sticks, are represented by IDs, as in the table seen above for the Styles.

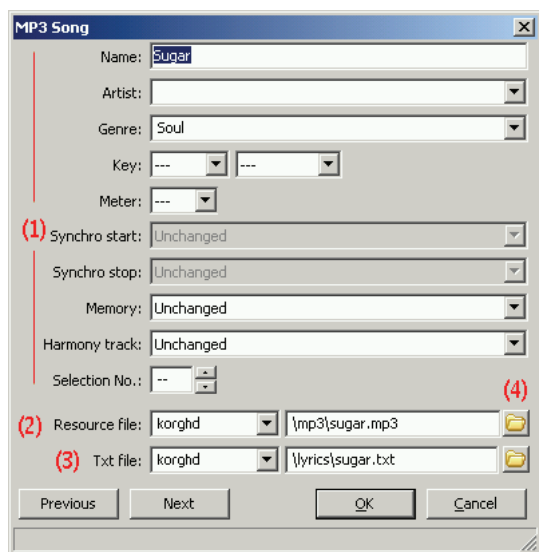
**Browse icon** — Click this icon to open a standard file selector, and choose the midifile or the text file.

**Previous/Next buttons** — Click the Previous button to edit the previous entry of the list, or the Next button to edit the next entry of the list, without having to close the dialog box.

**OK/Cancel buttons** — Click the OK button to confirm changes and close the dialog box, or the Cancel button to abandon the changes and close the dialog box.

## Editing MP3 based entries

With this type of entry, you can write the full path of the MP3 file used as the resource (*only on models with an MP3 board installed*).



(1) Parameters (2) MP3 file path (3) TXT file path (4) Browse icon

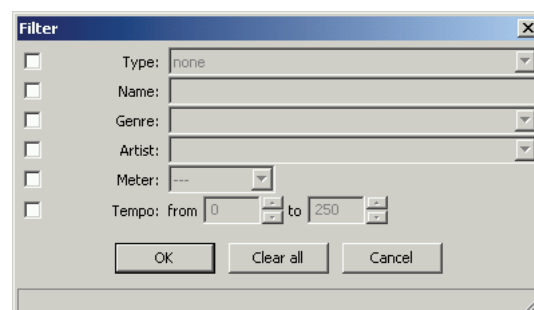
Editing is the same seen above for Standard MIDI File based entries.

**Previous/Next buttons** — Click the Previous button to edit the previous entry of the list, or the Next button to edit the next entry of the list, without having to close the dialog box.

**OK/Cancel buttons** — Click the OK button to confirm changes and close the dialog box, or the Cancel button to abandon the changes and close the dialog box.

## Filter dialog box

This dialog box appears when you press the Filter... button in the lower right corner of the Book panel, or choose the Edit > Filter... (Ctrl+F) command. Here you can define the view filter criteria for the Book panel. Available filter criteria are the same as in the Pa.



# Appendix

## Keyboard shortcuts

Command	Shortcut
<b>File menu</b>	
New	–
Open	Ctrl+O
Save	Ctrl+S
Save As...	Ctrl+Shift+S
Import files...	Ctrl+I
Export list...	Ctrl+E
Preferences...	–
Quit	Ctrl+Q
<b>Edit menu</b>	
Cut	Ctrl+X
Copy	Ctrl+C
Paste	Ctrl+V
Delete	Del
Select All	Ctrl+A
Move Up	Ctrl+Arrow Up
Move Down	Ctrl+Arrow Down
New Song > Style	Ctrl+N
New Song > MIDI	Shift+Ctrl+N
New Song > MP3	Alt+N
New List...	Ctrl+L
Filter...	Ctrl+F
<b>Help menu</b>	
Contents	F1
About...	–







**Address**

KORG ITALY SpA  
Via Cagiata, 85  
I-60027 Osimo (An)  
Italy

**Web**

[www.korgpa.com](http://www.korgpa.com)  
[www.korg.co.jp](http://www.korg.co.jp)  
[www.korg.com](http://www.korg.com)  
[www.korg.co.uk](http://www.korg.co.uk)  
[www.korgcanada.com](http://www.korgcanada.com)  
[www.laboitenoiiredumusicien.com](http://www.laboitenoiiredumusicien.com)  
[www.korg.de](http://www.korg.de)  
[www.ekomusicgroup.com](http://www.ekomusicgroup.com)  
[www.korg.es](http://www.korg.es)